

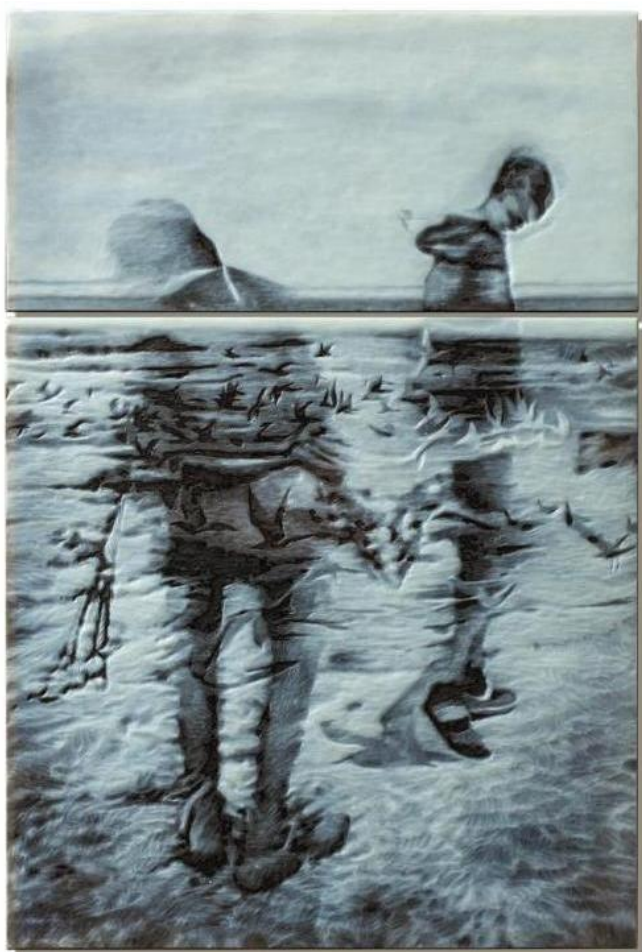
APRIL SURGENT

OF SEA AND SKY

October 5 - 28, 2017

First Thursday Opening October 5, 5-8 pm

Artist will be present



April Surgent, That Dream Then, It Was Here, 2017, Cameo engraved glass, 19.25"h x 13"w x .75"d

We are very pleased to present Of Sea and Sky, an exhibition of cameo engravings in glass by contemporary artist, April Surgent.

For six months in the spring and summer of 2016 April Surgent lived on a remote Hawaiian atoll. Roughly 1,200 miles from Honolulu, in the middle of the Pacific ocean, Surgent worked as a field biologist with the National Oceanic and Atmospheric Administration's Hawaiian Monk Seal Research Team. It was on this isolated island, working with just two other women field biologists, that Surgent gathered the images, data, material, and inspiration that drove her to create this most recent body of work. The resulting exhibition, *Of Sea and Sky*, is, at its root, a portrait of a place and of an experience. The surreal and hauntingly beautiful engravings and accompanying photographs and installations depict a fragile environment perched precariously in the middle of an expansive blue ocean.

But at their heart, Surgent's artworks are more than just a record of place and time. They are a poetic and contemplative depiction of the essential relationship we, as humans, have with our environment. Alternately stark, isolating, peaceful, and sublime, Surgent's engravings are meditations on the potent moments we are granted and the significant responsibilities that we inherit as individuals living on this planet. They are an ode to the oceans and landscapes that shape who we are. And they are a subtle reminder to consider how we, through our actions, are permanently altering those places.

The work in this exhibition is as compelling and important as any we've seen in contemporary glass. Surgent presents a body of work that is heartfelt and authentic; work that provokes us to be more actively conscious about the tenuous bond we have with the world we inhabit. It is with great pride that we present this thoughtful new body of work by April Surgent at Traver Gallery.

Surgent studied at the Australian National University, Canberra, Australia. In 2003, she changed her focus from blown to wheel engraved glass after studying under Czech master engraver Jiri Hrcuba at the Pilchuck glass school. In 2009 she received a Behnke Foundation Neddy Fellowship and in 2016 a USA Ford Fellowship. Her work can be found in the permanent collections of the Museum of Glass, Tacoma, WA, the Ulster Museum acquisition, Belfast, Ireland, and the Corning Museum of Glass, Corning, NY.

For additional information, please contact Traver Gallery at 206.587.6501 or info@travergallery.com